

ORIGINAL ARTICLE

Open Access



Evaluation of spatial dependence of point spread function-based PET reconstruction using a traceable point-like ^{22}Na source

Taisuke Murata^{1†}, Kenta Miwa^{2*†}, Noriaki Miyaji³, Kei Wagatsuma⁴, Tomoyuki Hasegawa⁵, Keiichi Oda⁶, Takuro Umeda³, Takashi Iimori¹, Yoshitada Masuda¹, Takashi Terauchi³ and Mitsuru Koizumi³

* Correspondence:

kenta5710@gmail.com

[†]Equal contributors

²Department of Radiological Sciences, School of Health Sciences, International University of Health and Welfare, 2600-1 Kitakanemaru, Ohtawara, Tochigi 324-8501, Japan
Full list of author information is available at the end of the article

Abstract

Background: The point spread function (PSF) of positron emission tomography (PET) depends on the position across the field of view (FOV). Reconstruction based on PSF improves spatial resolution and quantitative accuracy. The present study aimed to quantify the effects of PSF correction as a function of the position of a traceable point-like ^{22}Na source over the FOV on two PET scanners with a different detector design.

Methods: We used Discovery 600 and Discovery 710 (GE Healthcare) PET scanners and traceable point-like ^{22}Na sources (<1 MBq) with a spherical absorber design that assures uniform angular distribution of the emitted annihilation photons. The source was moved in three directions at intervals of 1 cm from the center towards the peripheral FOV using a three-dimensional (3D)-positioning robot, and data were acquired over a period of 2 min per point. The PET data were reconstructed by filtered back projection (FBP), the ordered subset expectation maximization (OSEM), OSEM + PSF, and OSEM + PSF + time-of-flight (TOF). Full width at half maximum (FWHM) was determined according to the NEMA method, and total counts in regions of interest (ROI) for each reconstruction were quantified.

Results: The radial FWHM of FBP and OSEM increased towards the peripheral FOV, whereas PSF-based reconstruction recovered the FWHM at all points in the FOV of both scanners. The radial FWHM for PSF was 30–50 % lower than that of OSEM at the center of the FOV. The accuracy of PSF correction was independent of detector design. Quantitative values were stable across the FOV in all reconstruction methods. The effect of TOF on spatial resolution and quantitation accuracy was less noticeable.

Conclusions: The traceable ^{22}Na point-like source allowed the evaluation of spatial resolution and quantitative accuracy across the FOV using different reconstruction methods and scanners. PSF-based reconstruction reduces dependence of the spatial resolution on the position. The quantitative accuracy over the entire FOV of the PET system is good, regardless of the reconstruction methods, although it depends slightly on the position.

Keywords: Quantitative imaging, PET/CT, Point spread function, Resolution modeling, Spatial dependence

Background

Positron emission tomography/computed tomography (PET/CT) using ^{18}F -fluoro-2-deoxy-D-glucose (FDG) has become increasingly important for planning and evaluating the outcomes of treatment [1, 2] and this modality requires accurate quantitation of FDG uptake and distribution related to spatial resolution. However, a limitation associated with the PET/CT system is the degradation of spatial resolution that is attributed to the positron range effect, photon non-collinearity, and detector-related effects including the width of scintillator crystals, inter-crystal scattering, and inter-crystal penetration [3–6]. Detector-response blurring at locations far from the center of the field of view (FOV) is problematic [6, 7], particularly in the radial and axial dimensions.

Alessio et al. characterized the detector response using Monte Carlo simulations [7] and empirical measurements [8]. The detector response in an empirical measurement that separated radial and axial components was modeled as a point spread function (PSF), and PSF information was incorporated into a three-dimensional (3D) iterative reconstruction [4, 6]. A reconstruction algorithm using PSF correction has been reported to improve the spatial resolution in the scanner FOV. Such algorithms are provided from the vendors under different names (SharpIR from GE, TrueX HD-PET from Siemens and \times Sharp from Philips). However, PSF correction changes quantitative accuracy due to the Gibbs ringing overshoot at the edges [4, 9]. Furthermore, although few studies have evaluated the effects of PSF correction using the National Electrical Manufacturers Association (NEMA) body phantom located at the center of the FOV [10, 11], the relationship between FDG uptake at any location throughout the FOV and the accuracy of PSF correction remains unclear. The spatial resolution of the scanner can be measured by placing a point source within the scanner and acquiring scan data at varying locations in both the radial and axial dimension [6, 8].

A point-like ^{22}Na source (<1 MBq) that is appropriately related to the national standard in Japan was developed for PET calibration [12, 13]. The radioactivity of this source was calibrated with a Germanium-semiconductor spectrometer at an accredited calibration center (Japanese Radioisotope Association, Tokyo, Japan); the level of uncertainty in the measurement was <1.5 % ($k=2$). The long half-life of 2.6 years and low maximum positron energy of 0.546 MeV render traceable point-like ^{22}Na sources favorable for direct comparisons of spatial resolution and quantitation accuracy among PET scanners [13].

The present study aimed to quantify the effects of PSF correction as a function of the position of a traceable point-like ^{22}Na source over the FOV of two types of PET scanners.

Methods

Traceable point-like ^{22}Na source

The traceable point-like ^{22}Na source is described in detail elsewhere [12]. Briefly, the source consisted of a spherical aluminum capsule (outer diameter, 3.0 mm) and a spherical ion exchange resin bead (diameter 0.5 mm) with a surface that absorbs ^{22}Na . The influence of absorbed attenuation and scatter was negligible [12, 13]. The amount of source radioactivity was 0.3 MBq at the time of the comparison of PET scanners.

PET scanner

We used Discovery PET/CT 600 and Discovery PET/CT 710 scanners (GE Healthcare, Milwaukee, WI, USA). Table 1 shows the features of two PET devices compared herein. The Discovery 600 comprises 24 rings of 512 bismuth germinate (BGO) crystals ($4.7 \times 6.3 \times 30$ mm), covering transaxial and axial FOV of 700 and 157 mm, respectively. The spatial resolution at 1 cm from the center of the FOV was 4.9 mm at full width at half maximum (FWHM) according to NEMA NU2-2007 [14]. The Discovery 710 comprises 24 rings of 576 lutetium-yttrium oxyorthosilicate (LYSO) crystals ($4.2 \times 6.3 \times 25$ mm), covering transaxial and axial FOV of 700 and 157 mm, respectively. The spatial resolution at 1 cm from the center of the FOV was 4.7 mm at FWHM according to NEMA [15].

3D-positioning robot and data acquisition

The point-like ^{22}Na source was moved throughout the FOV using a 3D-positioning robot (IAI Co. Ltd., Shizuoka, Japan) that allowed motions with an accuracy of ± 0.02 mm (Fig. 1a). The robot was controlled by coded software running on a personal computer. The orientation accuracy of robot positioning was verified before each acquisition in three dimensions [6]. Data acquisition in each direction started with the source positioned at the center of the FOV. The source was then moved to the peripheral 30 cm of the transaxial FOV at 1 cm intervals in the directions of the x -, y -, and xy -axes (Fig. 1b). The xy -axis was moved in an oblique 45° direction, for example $(x,y = 0, 0)$, $(x,y = 1, 1)$, and $(x,y = 2, 2)$, namely, at $\sqrt{2}$ -cm intervals. PET data were acquired for 2 min at each point in 3D list mode.

Image reconstruction

We reconstructed PET data using the following algorithms: filtered back projection (FBP), baseline ordered subset expectation maximization (OSEM), OSEM + PSF, and OSEM + PSF + time-of-flight (TOF; Discovery 710 only). The PSF modeling used in this study was the SharpIR algorithm conceived by Alessio et al. [7, 8]. Thirty-one data series for the x - and y -axes and 22 data series for the xy -axis divided into each measured point were reconstructed. The iterative reconstruction parameters of the Discovery 600 were 2 iterations and 16 subsets for OSEM, and 3 iterations and 16 subsets for OSEM + PSF. The iterative reconstruction parameters of the Discovery 710 were 2 iterations and 18 subsets for OSEM, and 3 iterations

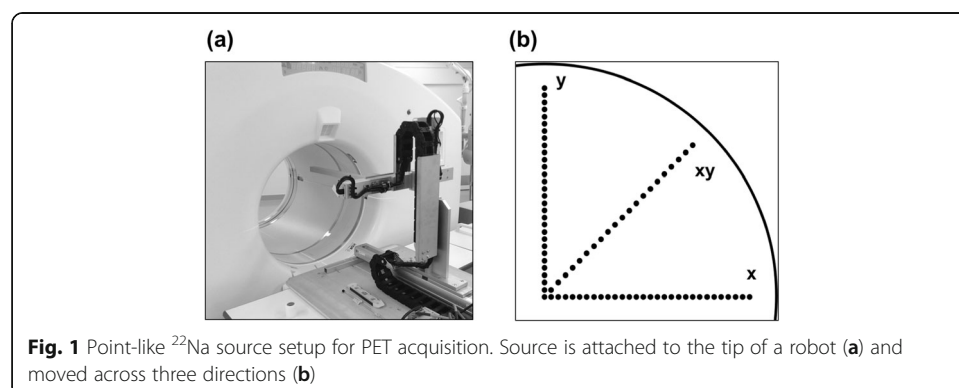


Table 1 Comparison of device features

	Discovery 600	Discovery 710
Transaxial FOV (mm)	700	700
Axial FOV (mm)	157	157
No. of ring	24	24
No. of individual crystals	12,288	13,824
No. of crystals/ring	512	576
No. of image planes	47	47
Crystal size (mm)	4.7 × 6.3 × 30	4.2 × 6.3 × 25
Crystal array per block	8 × 6	9 × 6
Scintillator material	BGO	LYSO
Coincidence window (nsec)	9.5	4.9

and 18 subsets for OSEM + PSF and OSEM + PSF + TOF. The image matrix was 256×256 (pixel size, 2.73 mm) and slice thickness was 3.27 mm. A smoothing filter was not used for post-processing. Attenuation and scatter were not corrected. The normalization scan was performed using a uniform cylindrical ^{18}F -filled phantom located at the center of the FOV.

FWHM analysis

The spatial resolution in the scanner FOV was determined from the FWHM of the PSF obtained from the activity distribution from the point-like ^{22}Na source. The FWHM in three directions for each measured point was calculated according to the NEMA requirements (NEMA-NU2-2012) [16]. The maximum value of the PSF was determined using a parabolic fit of the peak point and its two nearest-neighbor points. The position at half of the profile maximum value was determined by linear interpolation between adjacent pixels. The pixel size was set to 1.56 mm by reducing the reconstructed FOV width when evaluating the FWHM.

Quantitative analysis

Data were analyzed using OsiriX software (Pixmeo, Bernex, Switzerland). Circular regions of interest (ROI) were defined around the source position to obtain the total ROI value. We placed ROI on 21 image planes around the central image plane within a range of ± 10 image planes to cover the entire smeared radioactivity in the axial direction. The sum of the ROI values derived from 21 image planes was defined as ROI_{total}. Scattered 1.275-MeV γ rays along with β^+ decay of ^{22}Na might increase ROI values when the radius of the ROI is larger. In the present study, the ROI radius was set to 16 mm so that the uniformity in the field of view was evaluated using the traceable point-like source in a way that is independent of the partial volume effect, on the basis of a previous study [13]. The recovery coefficient (RC), a function of radial distance from the center of the FOV, served as a quantitative index [14], as follows:

$$\text{RC} = \text{ROI}_{\text{total}} \times v_{\text{pixel}} / (R_{\text{source}} / \epsilon)$$

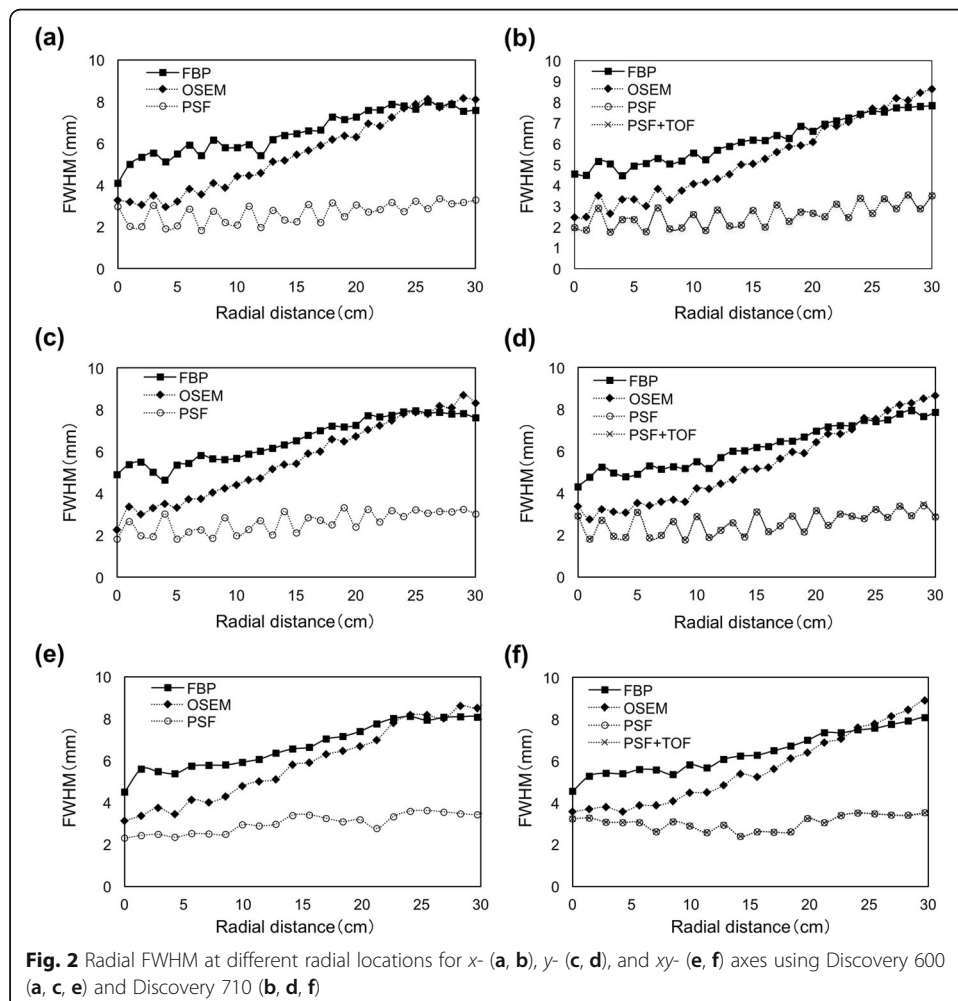
where v_{pixel} is the volume of pixel in cc, R_{source} is the emission rate of 0.511-MeV γ rays from the ^{22}Na source in s^{-1} , and ϵ is the β^+ branching ratio of ^{22}Na .

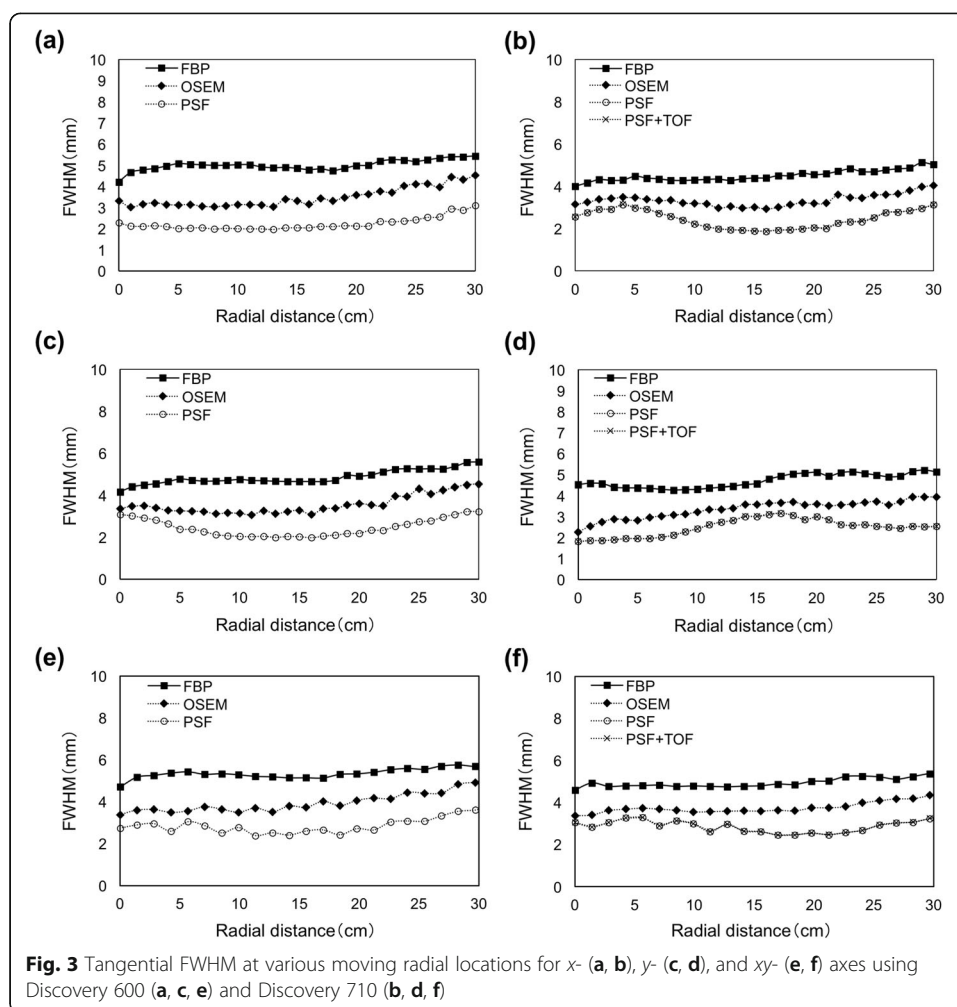
Results

The images of the point source for FBP and OSEM were broad and faint when located far from the center of the FOV, whereas hot spots for PSF and PSF + TOF became sharp and dense throughout the FOV. The trends of results from the Discovery 600 and 710 scanners were almost identical.

Figure 2 shows the radial FWHM as a function of radial distance from the center of the FOV in three directions. The radial FWHM for FBP and OSEM increased towards the periphery of the FOV, whereas PSF and PSF + TOF recovered and spatial resolution was more uniform over the entire FOV. The FWHM data were similar among the measured directions and scanners. The results of PSF and PSF + TOF were identical using the Discovery 710. The radial FWHM for PSF and PSF + TOF increased and decreased in a cyclic fashion across the FOV. Figure 3 shows the tangential FWHM. Regardless of reconstruction methods, the tangential FWHM were stable at all positions. The tangential FWHM of PSF and PSF + TOF were smaller than those of FBP and OSEM.

Figure 4 shows that the RC as a function of radial distance from the center of the FOV in three directions, remained stable across the FOV in all reconstruction



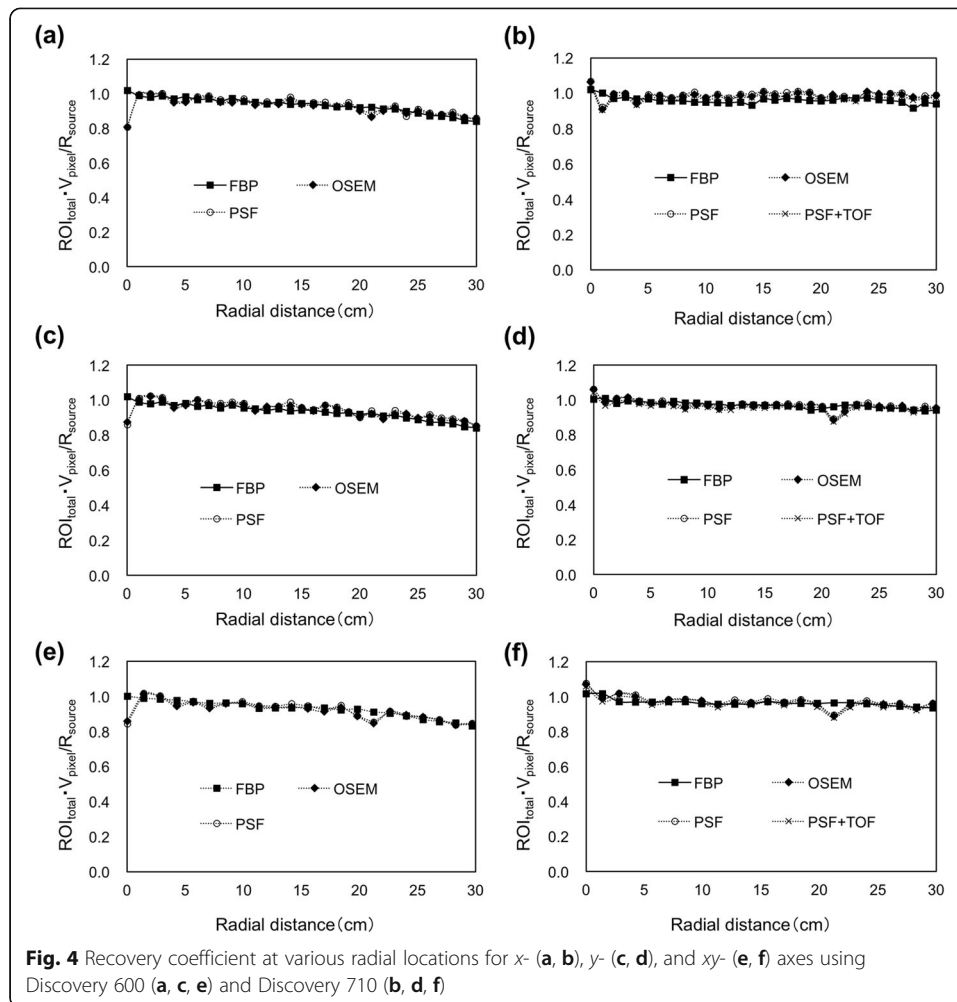


methods, in particular for the Discovery 600, and fluctuated only at the center of the FOV in both scanners.

Discussion

We evaluated the spatial dependence of PSF-based PET reconstruction using a traceable ^{22}Na point-like source on two PET scanners with different detector designs. The results showed that PSF correction improves spatial resolution and does not affect quantitative values over the entire FOV.

The methodology used to measure the response of the PET system that determines the spatial dependence of the PSF inside the FOV is important. Several factors must be considered to obtain an accurate response from the PET system, such as the source dimensions, type of isotope, media surrounding the point source (air, water, or warm radioactive background), and the number and position of measurements to account for all possible responses of the system [17]. In particular, attenuation and scattering owing to the source (phantom) and its correction produce uncertainty in performance evaluations. We adopted a ^{22}Na point-like source that is traceable to a national standard, and a 3D-positioning robot. Although the ^{22}Na point-like source has been proposed for PET calibration [12, 13], it is also useful



for evaluating the intrinsic characteristics of different PET scanners in terms of responses to the source in a manner that is independent of uncertainty caused by attenuation and scatter.

The radial FWHM for FBP and OSEM increased to approximately 4 and 5 mm, respectively, for the scanner FOV at 30 cm, whereas tangential FWHM was more or less independent of the radial offset (Figs. 2 and 3). Both PSF and PSF + TOF achieved a radial FWHM in the peripheral FOV that was equivalent to the center of FOV, and the FWHM was uniform (approximately 2 mm) across the FOV in both scanners. Although this FWHM was 30–50 % lower than that of OSEM at the center of FOV, evaluation with the point source in air might have caused PSF over-correction of resolution because of unacceptable noise properties, which is a clinically unrealistic scenario. Alessio et al. found more modest resolution gains with PSF correction when sources were placed in a warm background [8]. On the other hand, the FWHM were similar between the Discovery 600 and 710 scanner using PSF correction. Wiant et al. examined the spatial dependence of PSF-based reconstruction in 2D mode (with septa) using a Discovery ST PET/CT scanner (GE Healthcare), thus validating the accuracy of the PSF correction across the FOV [6]. The accuracy of PSF correction was independent of detector design, possibly because the detector-response function was determined by optimizing each type of scanner.

The radial FWHMs for PSF and PSF + TOF slightly increased and decreased in a cyclic fashion across the FOV (Fig. 2). This could be explained by the location of the point source within a pixel. The maximum pixel value was underestimated due to the position of the source relative to the grid of pixel separation [18]. The point spread function of hotspots became deformed (sharp and dense) by PSF correction, and thus the location of a point source in a pixel is thought to considerably influence the FWHM. This problem can be addressed to decrease the FOV or increase the matrix size.

Time-of-flight could reduce axial blurring to recognize the correct axial plane of origin for each line-of-response (LOR) [19]. However, TOF did not affect the spatial resolution of the entire transaxial FOV (Figs. 2 and 3). The FWHM of spatial uncertainty using TOF was around 7–8 cm since the time resolution of LYSO was 500 psec; thus, TOF does not directly improve spatial resolution [20].

Quantitative performance among different reconstructions across FOV has not previously been evaluated. The RC was stable across the FOV in all reconstruction methods using both scanners. We calculated the total ROI values covering the traceable ^{22}Na point-like source to create a quantitative index. Although the degree of smearing of radioactivity differed depending on the reconstruction methods, $\text{ROI}_{\text{total}}$ remained constant across all reconstruction methods. We found that PSF correction does not impact the total quantified value regardless of changes in peak height and the shape of the PSF. The integral of the modeled PSF normally equals unity and therefore it has no effect on the total reconstructed activity, only on how exactly that activity is distributed in the PET image. This is confirmed by the results that the curves for OSEM, OSEM with PSF, and OSEM with TOF and PSF are identical. The RC fluctuated only at the center of FOV in both scanners. The uncertainty of measurement at the center of the FOV in PET is due to a geometric factor, which principally results in avoiding taking measurements at the center of the FOV during quantitative analyses [13]. The RC of PSF and PSF + TOF were identical. The point-like ^{22}Na source was small and independent of absorber attenuation and scatter, and thus TOF gain was not obtained [20].

The results shown in Fig. 4 revealed that the quantification is indeed position dependent, with excellent performance near the center of the FOV, and a slight underestimation near the edge of the FOV. The detector efficiency variations and geometric factors such as the solid angle subtended are typically corrected by the normalization scan for the uniformity across the FOV [21]. Nevertheless, the RC decreased slightly towards the periphery of the FOV in all reconstruction methods. We consider that this might be due to the uncertainty of a standard normalization method using cylindrical water phantoms and the uncertainty of attenuation and scatter corrections.

The present study has several limitations. First, several PSF modeling with different principles are provided by vendors. Differences in PSF modeling might have influenced the results. Further study with other PSF modeling algorithms is required to assess the relationship between the location of FDG uptake inside the FOV and the accuracy of PSF correction. Second, we evaluated spatial resolution and quantitative accuracy using only one point source in air. A point source in air is a very artificial object, very different from the tracer distributions in human bodies which are seen in clinical routine. Further study should evaluate the influence of attenuation and scattering using a hot point source surrounded by activity and a phantom with hot spheres of different sizes

in a warm background in a more realistic imaging scenario to verify the advantages and disadvantages of PSF and TOF correction in the FOV periphery [22].

Conclusions

A traceable ^{22}Na point-like source allowed evaluations of spatial resolution and quantitative accuracy among different reconstructions across the FOV. We found that PSF-based reconstruction reduces dependence of the spatial resolution on the position. The quantitative accuracy over the entire FOV of the PET system is good, regardless of the reconstruction methods, although it depends slightly on the position. PSF correction might benefit the acquisition of PET images from obese patients that occupy most of the FOV and of small or distal lesions such as nodal metastases [23].

Acknowledgements

This work was supported in part by KAKENHI Grant-in-Aid for Young Scientists (B) (No.16K19831) and Grant-in-Aid for Scientific Research (C) (General) (No.15K08701) and from the Ministry of Education, Culture, Sports, Science and Technology (MEXT), the Japanese Government, and a Special Research Grant (No.2015-1011) from Kitasato University School of Allied Health Sciences.

Authors' contributions

TM was responsible for acquisitions, reconstructions, and data analysis and participated in the study design. KM participated in the design and drafted the manuscript. NM, KW, TU, TI, and YM assisted with acquisitions, reconstructions, and analysis of data. TH and KO were responsible for the phantom preparations and helped with the study design. TT and MK drafted the manuscript and revised it critically. All authors read and approved the final manuscript.

Competing interests

The authors declare that they have no competing interests.

Author details

¹Department of Radiology, Chiba University Hospital, 1-8-1 Inohana, Chuo-ku, Chiba-shi, Chiba 260-8677, Japan. ²Department of Radiological Sciences, School of Health Sciences, International University of Health and Welfare, 2600-1 Kitakanemaru, Ohtawara, Tochigi 324-8501, Japan. ³Department of Nuclear Medicine, Cancer Institute Hospital of Japanese Foundation for Cancer Research, 3-8-31 Ariake, Koto-ku, Tokyo 135-8550, Japan. ⁴Research Team for Neuroimaging, Tokyo Metropolitan Institute of Gerontology, 35-2 Sakae-cho, Itabashi-ku, Tokyo 173-0015, Japan. ⁵School of Allied Health Sciences, Kitasato University, 1-15-1 Kitasato, Minami-ku, Sagami-hara, Kanagawa 252-0373, Japan. ⁶Department of Neurological Technology, Faculty of Health Sciences, Hokkaido University of Science, 7-Jo 15-4-1 Maeda, Teine, Sapporo, Hokkaido 006-8585, Japan.

Received: 18 May 2016 Accepted: 16 October 2016

Published online: 26 October 2016

References

1. Sripes PG, Yaparalvi R. Technical aspects of positron emission tomography/computed tomography in radiotherapy treatment planning. *Semin Nucl Med.* 2012;42:283–8.
2. Wahl RL, Jacene H, Kasamon Y, et al. From RECIST to PERCIST: evolving considerations for PET response criteria in solid tumors. *J Nucl Med.* 2009;50 Suppl 1:122–50.
3. Rahmim A, Zaidi H. PET versus SPECT: strengths, limitations and challenges. *Nucl Med Commun.* 2008;29:193–207.
4. Rahmim A, Qi J, Sossi V. Resolution modeling in PET imaging: theory, practice, benefits, and pitfalls. *Med Phys.* 2013;40:064301.
5. Moses WW. Fundamental limits of spatial resolution in PET. *Nucl Instrum Methods Phys Res A.* 2011;648 Suppl 1:236–40.
6. Wiant D, Gersh JA, Bennett M, Bourland JD. Evaluation of the spatial dependence of the point spread function in 2D PET image reconstruction using LOR-OSEM. *Med Phys.* 2010;37:1169–82.
7. Alessio AM, Kinahan PE, Lewellen TK. Modeling and incorporation of system response functions in 3-D whole body PET. *IEEE Trans Med Imaging.* 2006;25:828–37.
8. Alessio AM, Stearns CW, Tong S, Ross SG, Kohlmyer S, Ganin A, et al. Application and evaluation of a measured spatially variant system model for PET image reconstruction. *IEEE Trans Med Imaging.* 2010;29:938–49.
9. Kidera D, Kihara K, Akamatsu G, Mikasa S, Taniguchi T, Tsutsui Y, et al. The edge artifact in the point-spread function-based PET reconstruction at different sphere-to-background ratios of radioactivity. *Ann Nucl Med.* 2016; 30:97–103.
10. Lee YS, Kim JS, Kim KM, Kang JH, Lim SM, Kim HJ. Performance measurement of PSF modeling reconstruction (True X) on Siemens Biograph TruePoint TrueV PET/CT. *Ann Nucl Med.* 2014;28:340–8.
11. Tong S, Alessio AM, Kinahan PE. Noise and signal properties in PSF-based fully 3D PET image reconstruction: an experimental evaluation. *Phys Med Biol.* 2010;55:1453–73.
12. Hasegawa T, Sato Y, Oda K, Wada Y, Murayama H, Yamada T. Semi-quantitative and simulation analyses of effects of γ rays on determination of calibration factors of PET scanners with point-like (^{22}Na) sources. *Phys Med Biol.* 2011;56:6031–45.

13. Hasegawa T, Oda K, Wada Y, Sasaki T, Sato Y, Yamada T, et al. Validation of novel calibration scheme with traceable point-like (^{22}Na) sources on six types of PET scanners. *Ann Nucl Med*. 2013;27:346–54.
14. De Ponti E, Morzenti S, Guerra L, Pasquali C, Arosio M, Bettinardi V, et al. Performance measurements for the PET/CT Discovery-600 using NEMA NU 2-2007 standards. *Med Phys*. 2011;38:968–74.
15. Bettinardi V, Presotto L, Rapisarda E, Picchio M, Gianolli L, Gilardi MC. Physical performance of the new hybrid PET/CT Discovery-690. *Med Phys*. 2011;38:5394–411.
16. National Electrical Manufacturers Association. NEMA NU 2-2012 performance measurements of positron emission tomographs. Rosslyn, VA: National Electrical Manufacturers Association; 2012.
17. Rapisarda E, Bettinardi V, Thielemans K, Gilardi MC. Image-based point spread function implementation in a fully 3D OSEM reconstruction algorithm for PET. *Phys Med Biol*. 2010;55:4131–51.
18. McCall KC, Barbee DL, Kissick MW, Jeraj R. PET imaging for the quantification of biologically heterogeneous tumours: measuring the effect of relative position on image-based quantification of dose-painting targets. *Phys Med Biol*. 2010;55:2789–806.
19. Moses WW. Time of flight in PET revisited. *IEEE Trans Nucl Sci*. 2003;50:1325–30.
20. Surti S. Update on time-of-flight PET imaging. *J Nucl Med*. 2015;56:98–105.
21. Saha GB. Basics of PET imaging: physics, chemistry, and regulations. New York: Springer Science+Business Media, Inc.; 2010.
22. Matheoud R, Ferrando O, Valzano S, Lizio D, Sacchetti G, Ciarmiello A, et al. Performance comparison of two resolution modeling PET reconstruction algorithms in terms of physical figures of merit used in quantitative imaging. *Phys Med*. 2015;31:468–75.
23. Bellevre D, Blanc Fournier C, Switers O, Dugué AE, Levy C, Allouache D, et al. Staging the axilla in breast cancer patients with ^{18}F -FDG PET: how small are the metastases that we can detect with new generation clinical PET systems? *Eur J Nucl Med Mol Imaging*. 2014;41:1103–12.

Submit your manuscript to a SpringerOpen[®] journal and benefit from:

- Convenient online submission
- Rigorous peer review
- Immediate publication on acceptance
- Open access: articles freely available online
- High visibility within the field
- Retaining the copyright to your article

Submit your next manuscript at ► springeropen.com
